

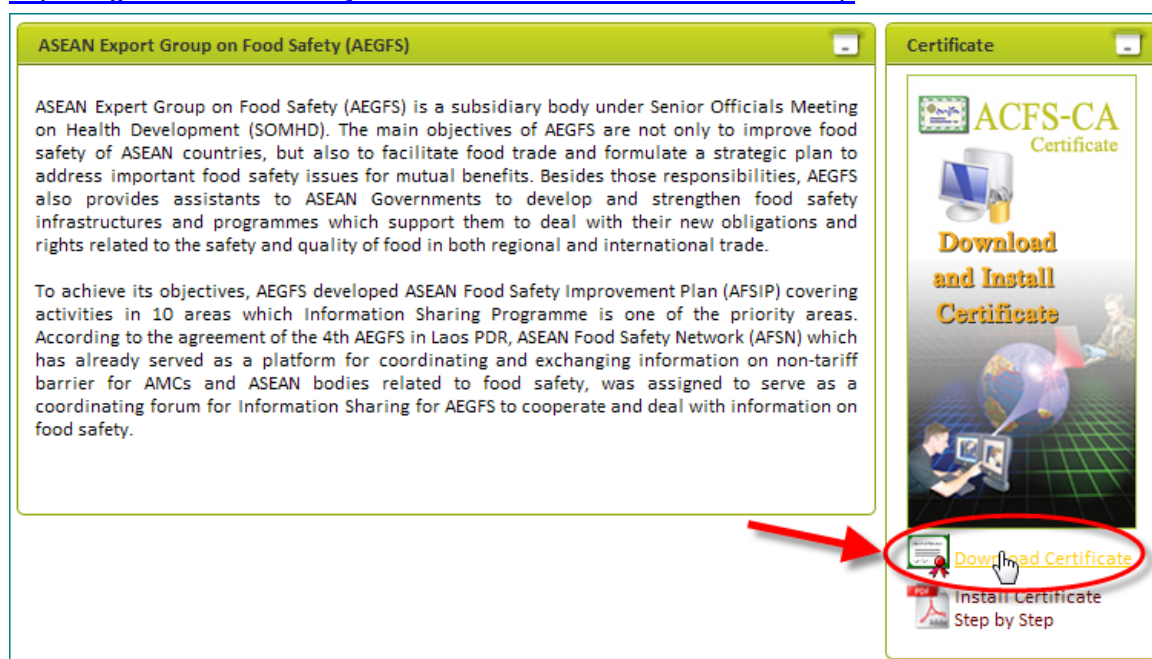
Download and Install Certificate

Install Certificate

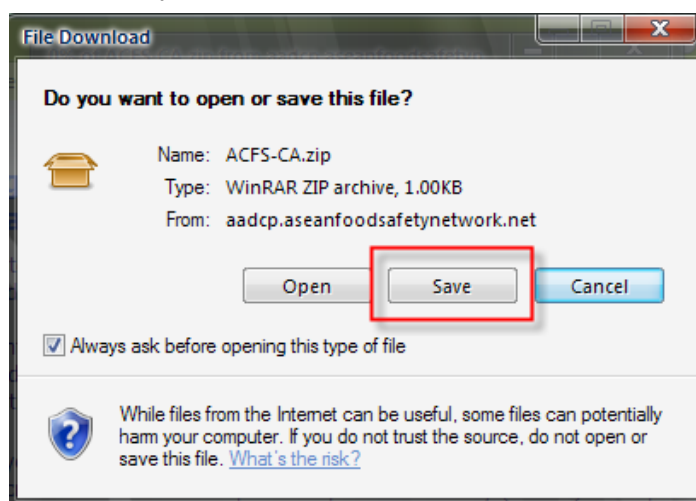
Download Certificate

1. Access to Website AEGFS and Click “Download Certificate” (as shown in picture below) or you could also download from this following link.

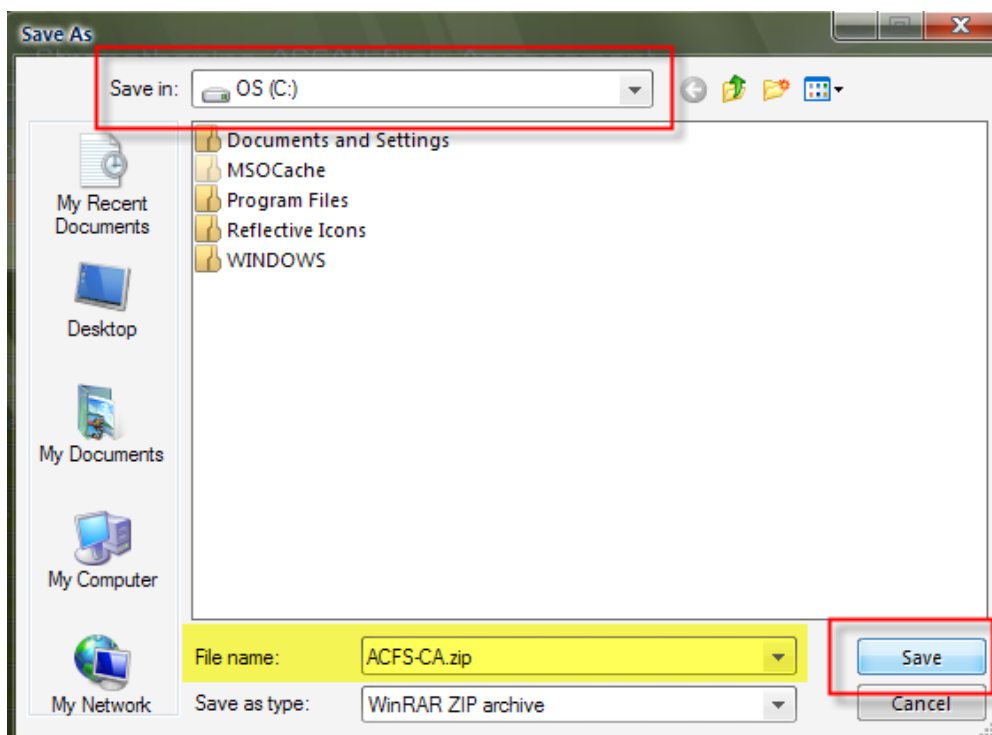
<http://aegfs.aseanfoodsafetynetwork.net/Portals/0/Cert/ACFS-CA.zip>



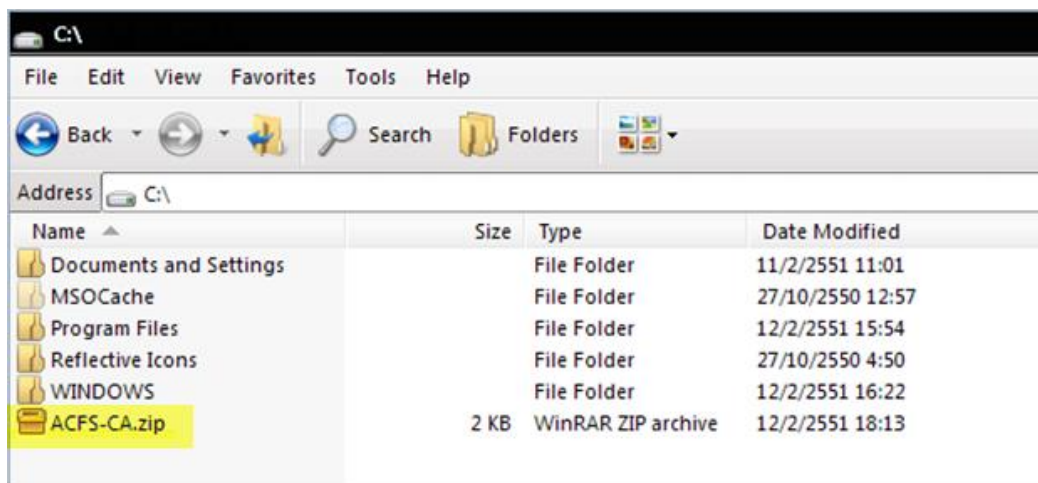
2. The new popup window (File Download) will ask you to open save or cancel the file named ACFS-CA.zip, then Click “Save”.



3. There will be another new popup window (**Save As**) for selecting your destination drive to save a file. In “Save in:” you can dropdown and select destination drive, for sample we select drive C: to save a file, then click “Save”

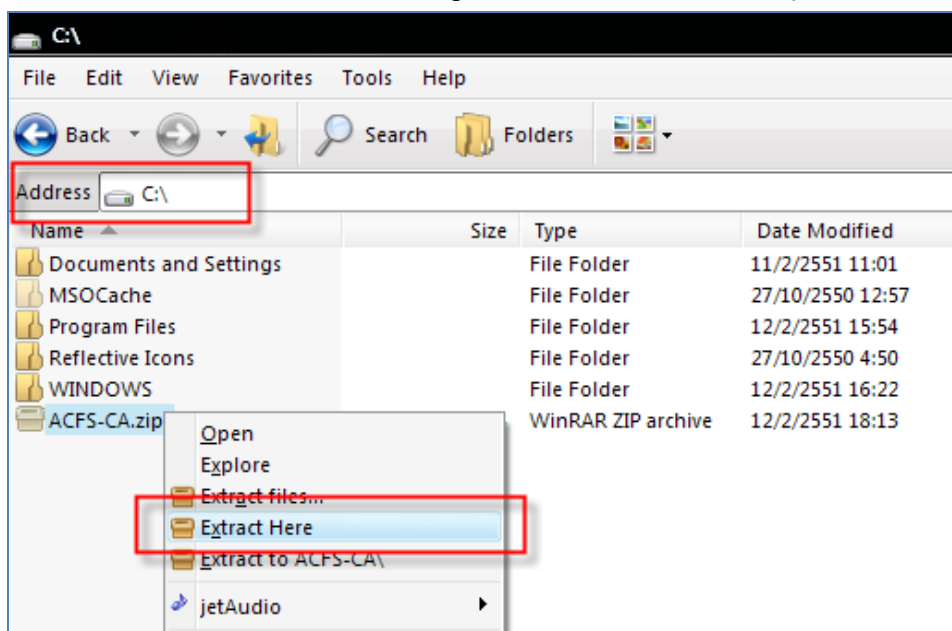


4. A file “ACFS-CA.zip” will be stored in drive C:.



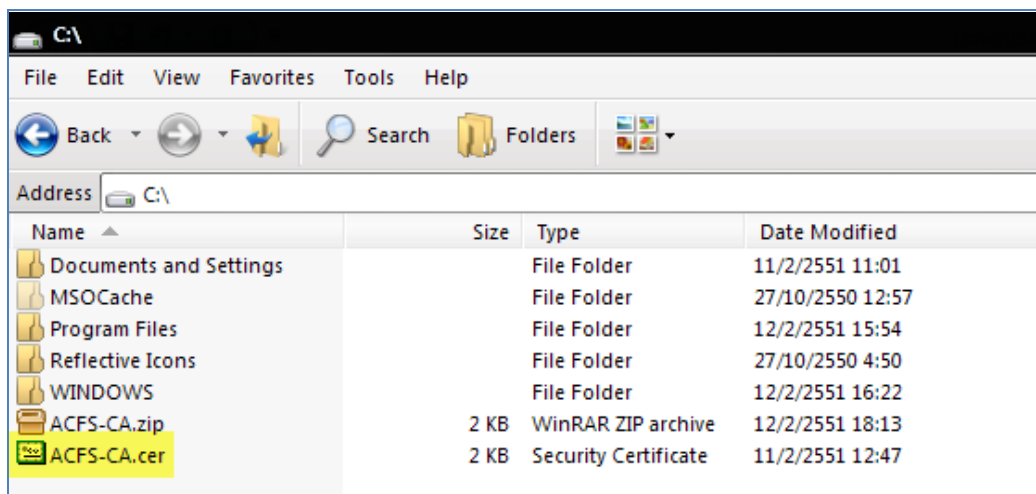
Install Process

1. In order to install Certificate you should open Windows Explorer and go to drive C: where Certificate file have been stored. Right click a file "ACFS-CA.zip" and select "Extract here".

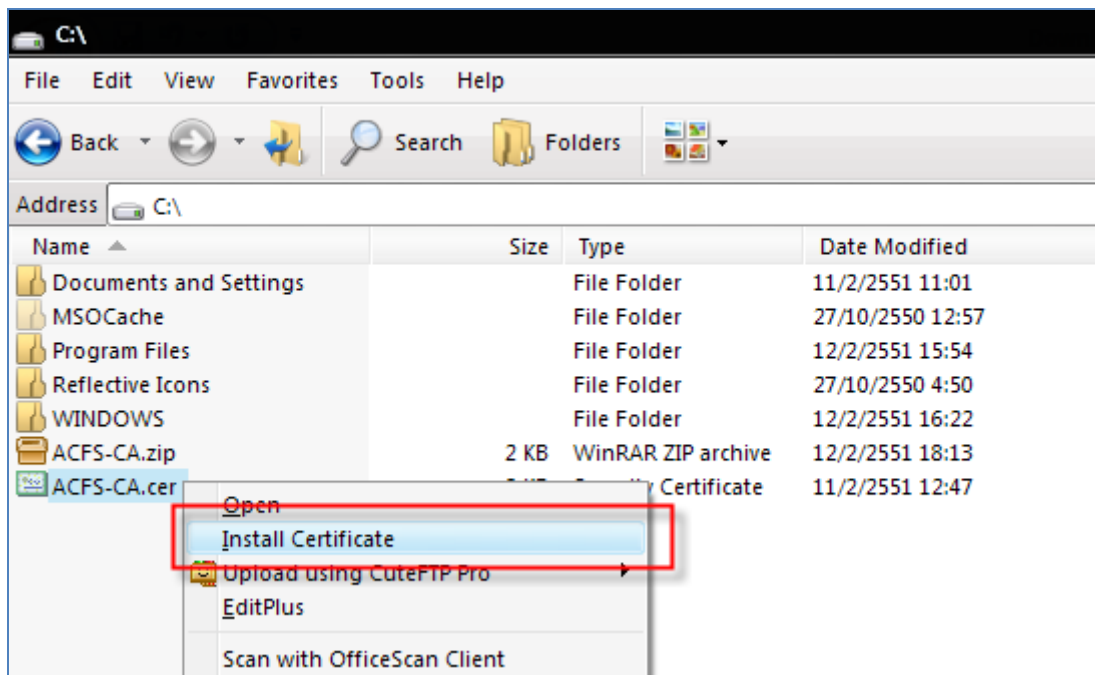


Remark: You can use another program to extracting a file.zip, this sample using WinRAR.

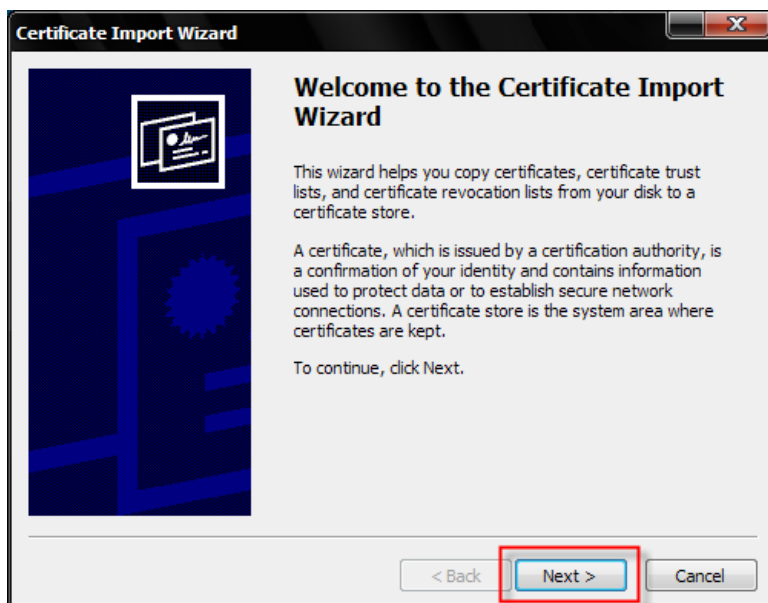
2. After extracting file "ACFS-CA.zip" you will have new file named "ACFS-CA.cer".



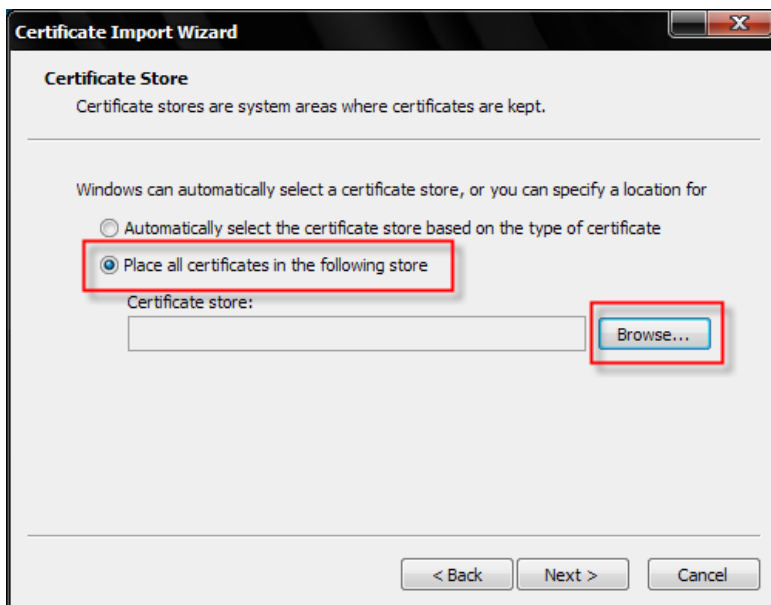
3. Right click at file “ACFS-CA.cer” and select “Install Certificate”



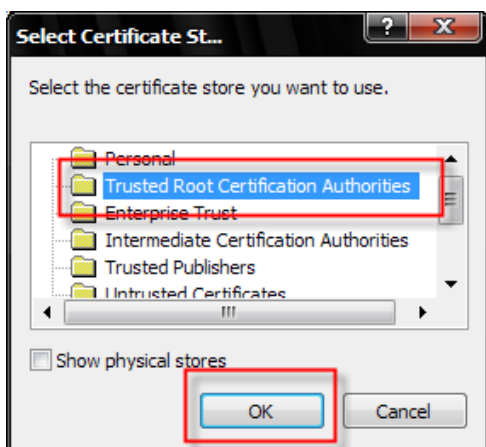
4. A new pop up window “Certificate Import Wizard” will show you the message “Welcome to the Certificate Import Wizard” then click “Next”.



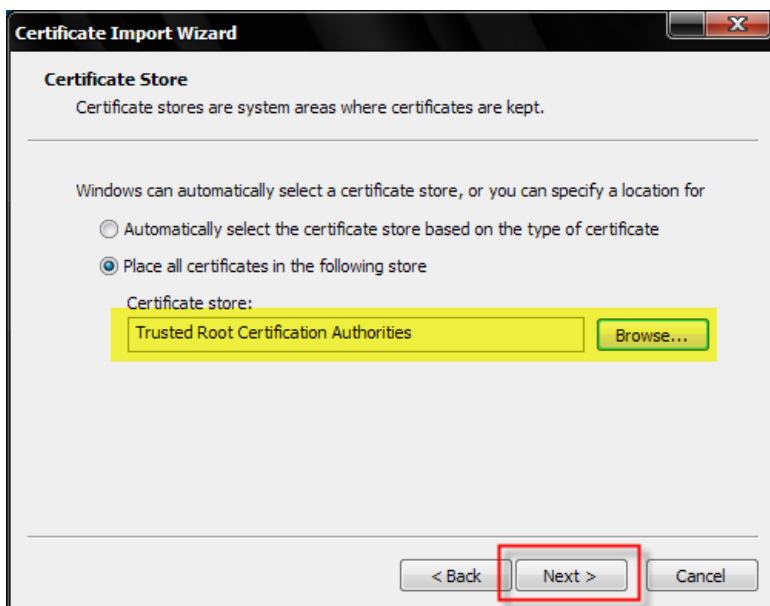
5. "Certificate Store" page allow you to select the destination to store this certificate. Select "Place all certificates in the following store" and click "Browse".



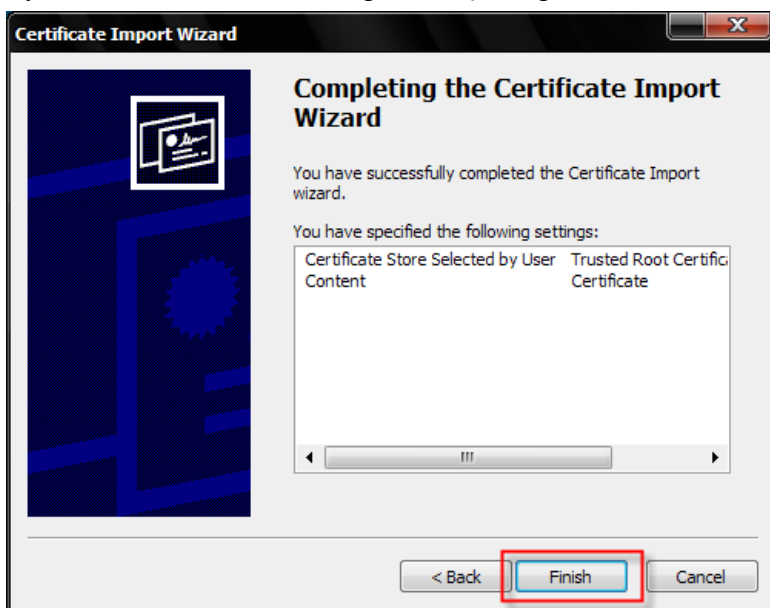
6. Select "Trusted Root Certification Authorities" and click "OK"



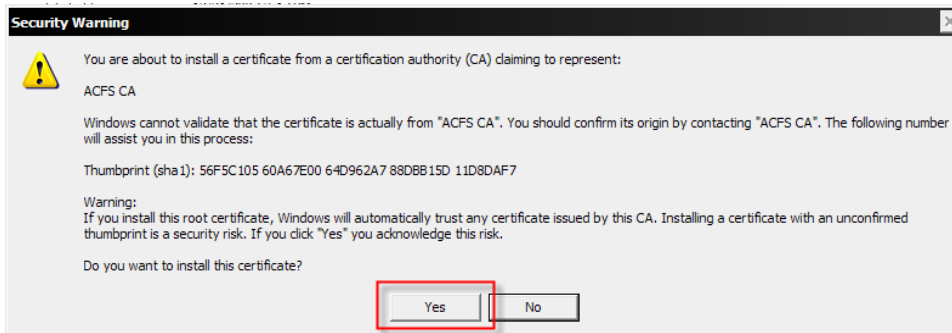
7. After select to destination to store and return to “Certificate Store” page, Click “Next”



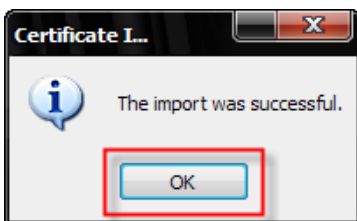
8. System will show the message “Completing the Certificate Import Wizard”, click “Finish”



9. There will be another pop up window "Security Warning" page, click "Yes"

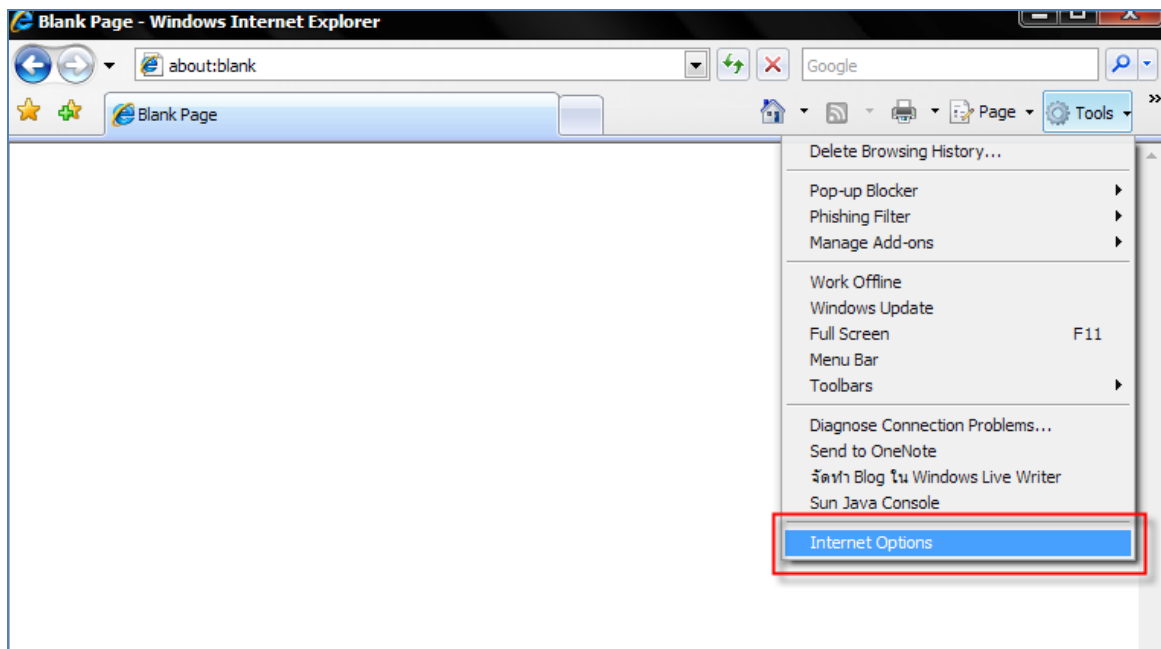


10. The confirm message for the successful of importing certificate file appear, click "OK"

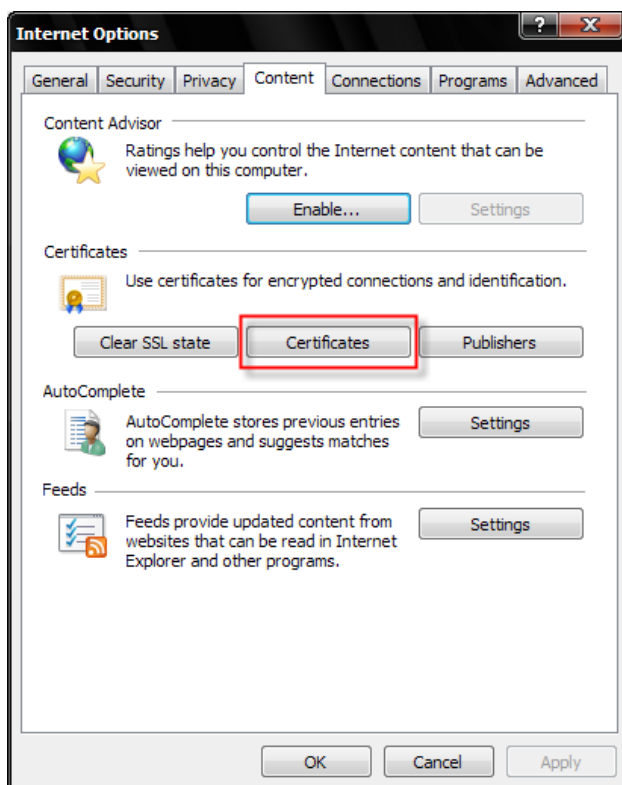


Verify Certificate and use

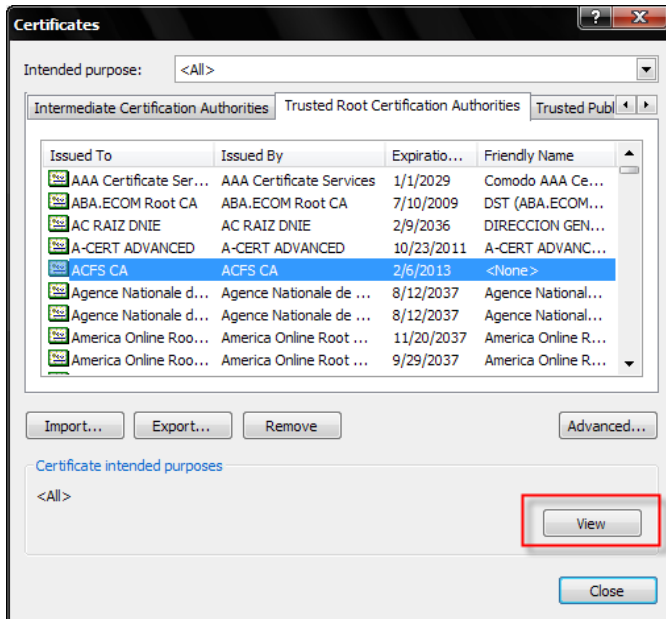
1. Open "Internet Explorer (IE)"
2. At Menu Bar, Click "Tools" and select "Internet Options"



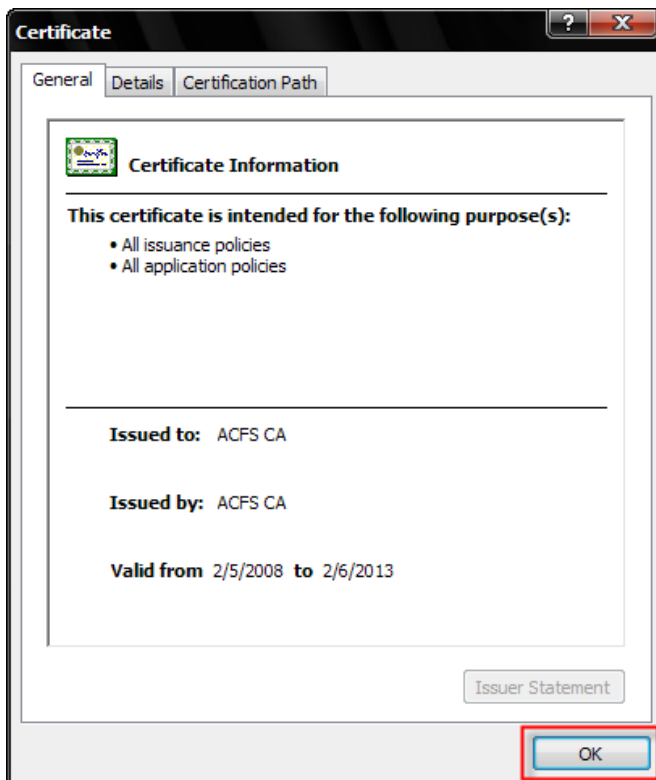
3. Select "Content" tab, at "Certificates" click "Certificates"



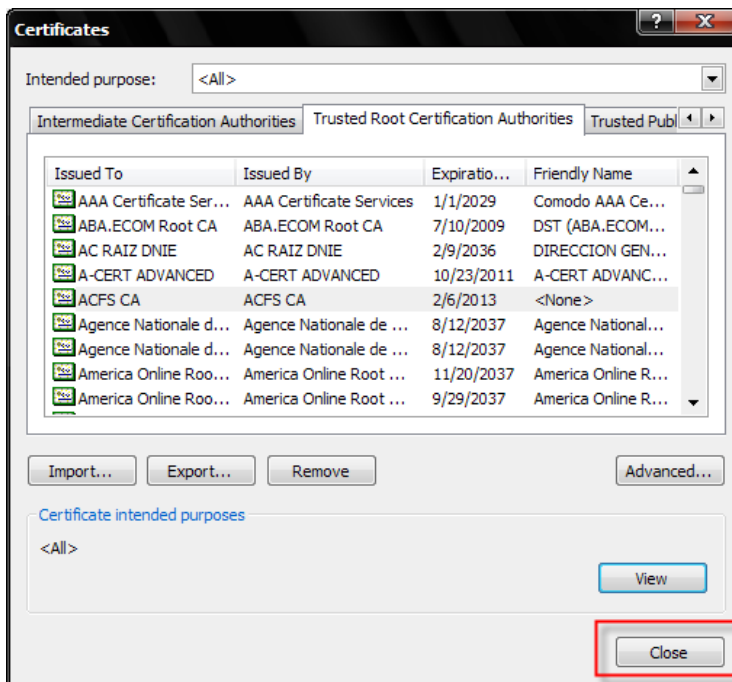
4. At “Certificates” page, click tab “Trusted Root Certification Authorities” select “ACFS CA”. If you want to see Certificate Information, click “View”



5. You will see “Certificate Information” page, then click “OK”



6. Return to “Certificates” page and click “Close”



7. Return to “Internet Options” page, click “OK”

